



Wolford Mountain Multi-use Trail

Getting There

To get to the Wolford Mountain Trail turn north onto County Road 22 from Highway 40 at the east end of Kremmling. Follow CR 22 for one mile and turn left onto County Road 224. Go approximately 3.4 miles and turn left onto BLM Road 312, continuing another .6 mile to BLM Trail 342 on the right. Park off of 312 by the buck and rail fence at the bottom of Trail 342.

General Information

The Wolford Mountain area provides unrestricted use for foot traffic throughout the area. There are 120 miles of designated roads and trails in the Wolford Mountain Recreation Management Area. Trails 342 and 403 are open to motorcycles from June 1 through September 14 each year. Outside of those dates, they are open only to non-motorized uses. All of the trails described herein allow motorized use. The top of Wolford Mountain is on private property.

Trail 342 climbs steeply up the southern face of Wolford Mountain, gaining just over 1,000 feet in approximately one mile. Most of the route is sunny and exposed, with scattered junipers and sagebrush. Near the top of the mountain, the trail enters the trees. Just after entering the trees, follow left at a trail fork to avoid trespassing on private property. The trail emerges from the trees and leads to a southwesterly ridge and connection to Trail 403. At the ridge, the trail offers expansive views of the Muddy Creek and Colorado River valleys and the surrounding mountains. Trail 342 is approximately 1.3 miles in length to its connection with Trail 403. Continuing north on Trail 403 leads through the trees and down the northwest face of Wolford Mountain for 1.5 miles, to BLM Road 378, crossing BLM Road 417 at 1.3 miles. Return the way you came, or choose from many other options for loop opportunities. Following 417 west towards Wolford Mountain Reservoir to 427, 331, 329 and 312 to return to the trailhead yields an approximately 6.2 mile loop all together.

It is recommended to obtain a free copy of the Wolford Mountain Travel Management Area Map from the Kremmling Field Office, or download it for free with the Avenza app for smartphones, which will track your location on the map. Lands managed by the BLM in the Kremmling Field Office are highly intermixed with private property. Please respect private land!

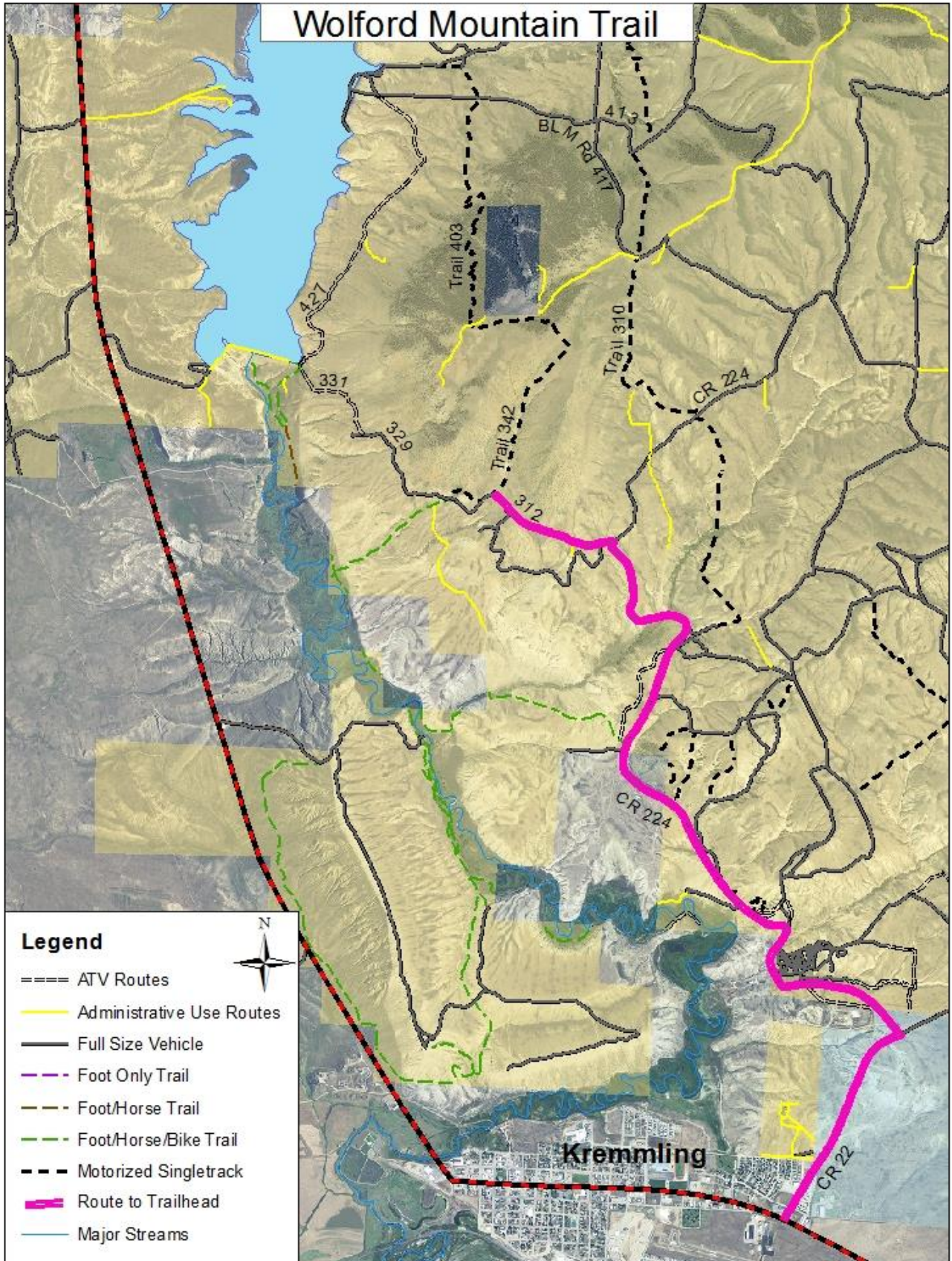
Safety

Obtain a weather forecast prior to your visit. Weather conditions can change quickly. Watch the sky for dark clouds moving in. Listen for thunder. Feel for changes in wind direction, speed and temperature.

Sunscreen; rain gear, and layered clothing are recommended. Bring plenty of water to drink, as these trails are generally strenuous, sunny and exposed.

The trail over Wolford Mountain allows use by motorcycles from June 1 through September 14 annually. Non-motorized users are probably best advised to utilize the trail outside of the motorized use season due to the steepness and likely speed of motorized users.

Wolford Mountain Trail



Legend

- ==== ATV Routes
- Administrative Use Routes
- Full Size Vehicle
- - - Foot Only Trail
- - - Foot/Horse Trail
- - - Foot/Horse/Bike Trail
- - - Motorized Singletrack
- Route to Trailhead
- Major Streams



Kremmling